



Juvenile Demographics and Statistics

Race/ Ethnicity	COMMITTED		WAIVED		PROBATIONER		PAROLE SERVICES		Total									
	MALE	FEMALE	MALE	FEMALE	MALE	FEMALE	MALE	FEMALE										
BLACK	113	82.48%	3	75.00%	75	68.18%	3	100.00%	16	50.00%	1	100.00%	80	73.39%	5	83.33%	296	73.63%
HISPANIC	18	13.14%	1	25.00%	23	20.91%	0	0.00%	9	28.13%	0	0.00%	22	20.18%	0	0.00%	73	18.16%
WHITE	6	4.38%	0	0.00%	9	8.18%	0	0.00%	6	18.75%	0	0.00%	6	5.50%	1	16.67%	28	6.97%
ASIAN	0	0.00%	0	0.00%	3	2.73%	0	0.00%	0	0.00%	0	0.00%	1	0.92%	0	0.00%	4	1.00%
Others	0	0.00%	0	0.00%	0	0.00%	0	0.00%	1	3.13%	0	0.00%	0	0.00%	0	0.00%	1	0.25%
Total	137	100.00%	4	100.00%	110	100.00%	3	100.00%	32	100.00%	1	100.00%	109	100.00%	6	100.00%	402	100.00%

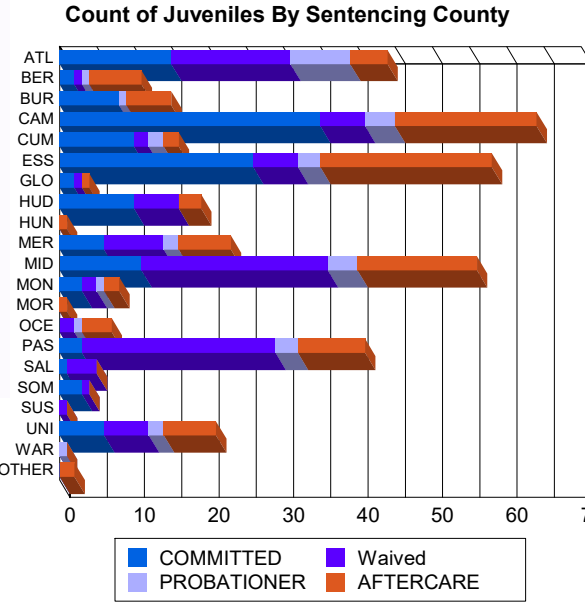
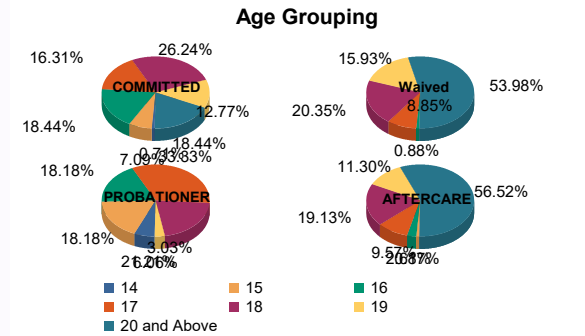
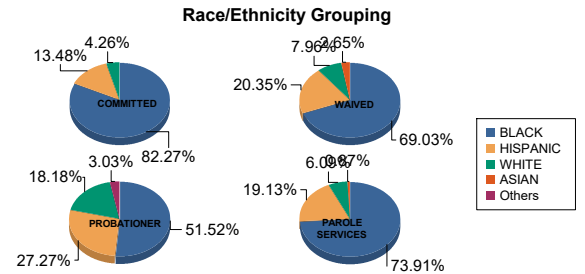
Age

14	1	0.73%	0	0.00%	0	0.00%	0	0.00%	2	6.25%	0	0.00%	0	0.00%	0	0.00%	3	0.75%
15	7	5.11%	3	75.00%	0	0.00%	0	0.00%	6	18.75%	0	0.00%	1	0.92%	0	0.00%	17	4.23%
16	25	18.25%	1	25.00%	1	0.91%	0	0.00%	6	18.75%	0	0.00%	3	2.75%	0	0.00%	36	8.96%
17	23	16.79%	0	0.00%	9	8.18%	1	33.33%	11	34.38%	0	0.00%	11	10.09%	0	0.00%	55	13.68%
18	37	27.01%	0	0.00%	23	20.91%	0	0.00%	6	18.75%	1	100.00%	20	18.35%	2	33.33%	89	22.14%
19	18	13.14%	0	0.00%	17	15.45%	1	33.33%	1	3.13%	0	0.00%	12	11.01%	1	16.67%	50	12.44%
20 and Above	26	18.98%	0	0.00%	60	54.55%	1	33.33%	0	0.00%	0	0.00%	62	56.88%	3	50.00%	152	37.81%
Total	137	100.00%	4	100.00%	110	100.00%	3	100.00%	32	100.00%	1	100.00%	109	100.00%	6	100.00%	402	100.00%

Average Age	18.05	15.25	20.00	19.00	16.50	18.00	21.10	20.00	19.30
-------------	-------	-------	-------	-------	-------	-------	-------	-------	-------

Sentencing County

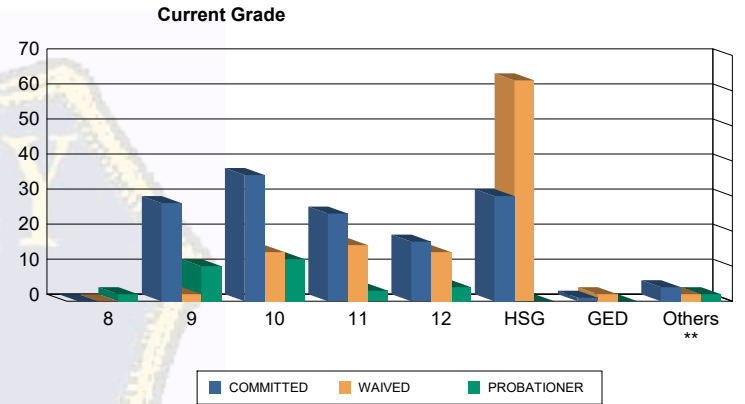
ATL	15	10.95%	0	0.00%	16	14.55%	0	0.00%	8	25.00%	0	0.00%	5	4.59%	0	0.00%	44	10.95%
BER	2	1.46%	0	0.00%	1	0.91%	0	0.00%	1	3.13%	0	0.00%	7	6.42%	0	0.00%	11	2.74%
BUR	7	5.11%	1	25.00%	0	0.00%	0	0.00%	1	3.13%	0	0.00%	6	5.50%	0	0.00%	15	3.73%
CAM	35	25.55%	0	0.00%	5	4.55%	1	33.33%	4	12.50%	0	0.00%	17	15.60%	2	33.33%	64	15.92%
CUM	10	7.30%	0	0.00%	2	1.82%	0	0.00%	2	6.25%	0	0.00%	2	1.83%	0	0.00%	16	3.98%
ESS	26	18.98%	0	0.00%	6	5.45%	0	0.00%	3	9.38%	0	0.00%	20	18.35%	3	50.00%	58	14.43%
GLO	2	1.46%	0	0.00%	1	0.91%	0	0.00%	0	0.00%	0	0.00%	1	0.92%	0	0.00%	4	1.00%
HUD	10	7.30%	0	0.00%	6	5.45%	0	0.00%	0	0.00%	0	0.00%	2	1.83%	1	16.67%	19	4.73%
HUN	0	0.00%	0	0.00%	0	0.00%	0	0.00%	0	0.00%	0	0.00%	1	0.92%	0	0.00%	1	0.25%
MER	4	2.92%	2	50.00%	8	7.27%	0	0.00%	2	6.25%	0	0.00%	7	6.42%	0	0.00%	23	5.72%
MID	11	8.03%	0	0.00%	23	20.91%	2	66.67%	4	12.50%	0	0.00%	16	14.68%	0	0.00%	56	13.93%
MON	3	2.19%	0	0.00%	2	1.82%	0	0.00%	1	3.13%	0	0.00%	2	1.83%	0	0.00%	8	1.99%
MOR	0	0.00%	0	0.00%	0	0.00%	0	0.00%	0	0.00%	0	0.00%	1	0.92%	0	0.00%	1	0.25%
OCE	0	0.00%	0	0.00%	2	1.82%	0	0.00%	1	3.13%	0	0.00%	4	3.67%	0	0.00%	7	1.74%
PAS	2	1.46%	1	25.00%	26	23.64%	0	0.00%	2	6.25%	1	100.00%	9	8.26%	0	0.00%	41	10.20%
SAL	1	0.73%	0	0.00%	4	3.64%	0	0.00%	0	0.00%	0	0.00%	0	0.00%	0	0.00%	5	1.24%
SOM	3	2.19%	0	0.00%	1	0.91%	0	0.00%	0	0.00%	0	0.00%	0	0.00%	0	0.00%	4	1.00%
SUS	0	0.00%	0	0.00%	1	0.91%	0	0.00%	0	0.00%	0	0.00%	0	0.00%	0	0.00%	1	0.25%
UNI	6	4.38%	0	0.00%	6	5.45%	0	0.00%	2	6.25%	0	0.00%	7	6.42%	0	0.00%	21	5.22%
WAR	0	0.00%	0	0.00%	0	0.00%	0	0.00%	1	3.13%	0	0.00%	0	0.00%	0	0.00%	1	0.25%
OTHER	0	0.00%	0	0.00%	0	0.00%	0	0.00%	0	0.00%	0	0.00%	2	1.83%	0	0.00%	2	0.50%
Total	137	100.00%	4	100.00%	110	100.00%	3	100.00%	32	100.00%	1	100.00%	109	100.00%	6	100.00%	402	100.00%





Juvenile Demographics and Statistics

Current Grade	COMMITTED		WAIVED		PROBATIONER		Total
	MALE	FEMALE	MALE	FEMALE	MALE	FEMALE	
8	0 (0.00%)	0 (0.00%)	0 (0.00%)	0 (0.00%)	2 (6.25%)	0 (0.00%)	2 (0.70%)
9	25 (18.25%)	3 (75.00%)	2 (1.82%)	0 (0.00%)	10 (31.25%)	0 (0.00%)	40 (13.94%)
10	35 (25.55%)	1 (25.00%)	14 (12.73%)	0 (0.00%)	11 (34.38%)	1 (100.00%)	62 (21.60%)
11	25 (18.25%)	0 (0.00%)	16 (14.55%)	0 (0.00%)	3 (9.38%)	0 (0.00%)	44 (15.33%)
12	17 (12.41%)	0 (0.00%)	13 (11.82%)	1 (33.33%)	4 (12.50%)	0 (0.00%)	35 (12.20%)
HSG	30 (21.90%)	0 (0.00%)	61 (55.45%)	2 (66.67%)	0 (0.00%)	0 (0.00%)	93 (32.40%)
GED	1 (0.73%)	0 (0.00%)	2 (1.82%)	0 (0.00%)	0 (0.00%)	0 (0.00%)	3 (1.05%)
Others **	4 (2.92%)	0 (0.00%)	2 (1.82%)	0 (0.00%)	2 (6.25%)	0 (0.00%)	8 (2.79%)
Total	137 (100.00%)	4 (100.00%)	110 (100.00%)	3 (100.00%)	32 (100.00%)	1 (100.00%)	287 (100.00%)

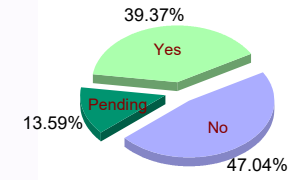


** Includes Aged Out Juveniles and Pending Records

Special Education Services

Yes	59 (43.07%)	3 (75.00%)	40 (36.36%)	1 (33.33%)	10 (31.25%)	0 (0.00%)	113 (39.37%)
No	65 (47.45%)	1 (25.00%)	47 (42.73%)	1 (33.33%)	20 (62.50%)	1 (100.00%)	135 (47.04%)
Pending	13 (9.49%)	0 (0.00%)	23 (20.91%)	1 (33.33%)	2 (6.25%)	0 (0.00%)	39 (13.59%)
Total	137 (100.00%)	4 (100.00%)	110 (100.00%)	3 (100.00%)	32 (100.00%)	1 (100.00%)	287 (100.00%)

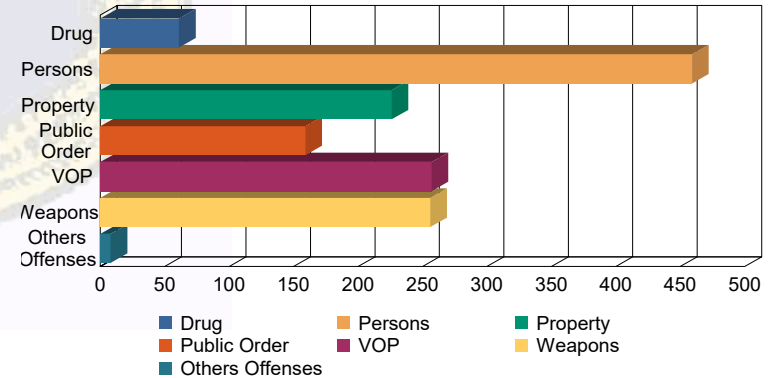
Special Education



Offense Categories

Drug	43 (4.55%)	0 (0.00%)	12 (3.52%)	0 (0.00%)	6 (6.00%)	0 (0.00%)	61 (4.28%)
Persons	248 (26.22%)	9 (28.13%)	175 (51.32%)	3 (75.00%)	24 (24.00%)	0 (0.00%)	459 (32.19%)
Property	161 (17.02%)	6 (18.75%)	39 (11.44%)	0 (0.00%)	19 (19.00%)	1 (33.33%)	226 (15.85%)
Public Order	121 (12.79%)	4 (12.50%)	27 (7.92%)	0 (0.00%)	7 (7.00%)	0 (0.00%)	159 (11.15%)
VOP	187 (19.77%)	7 (21.88%)	37 (10.85%)	0 (0.00%)	25 (25.00%)	1 (33.33%)	257 (18.02%)
Weapons	184 (19.45%)	6 (18.75%)	48 (14.08%)	1 (25.00%)	16 (16.00%)	1 (33.33%)	256 (17.95%)
Others Offenses	2 (0.21%)	0 (0.00%)	3 (0.88%)	0 (0.00%)	3 (3.00%)	0 (0.00%)	8 (0.56%)
Total *	946 (100.00%)	32 (100.00%)	341 (100.00%)	4 (100.00%)	100 (100.00%)	3 (100.00%)	1,426 (100.00%)

Offense Categories



* Juveniles may have multiple offenses