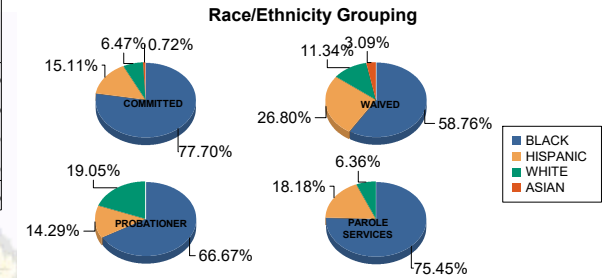




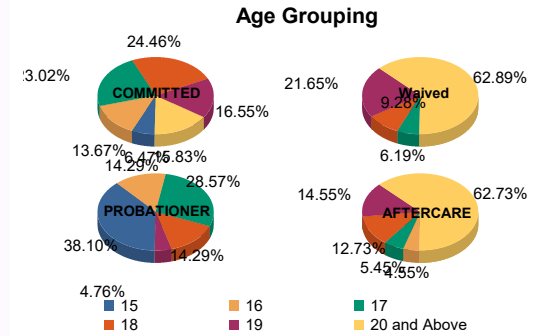
Juvenile Demographics and Statistics

Race/ Ethnicity	COMMITTED		WAIVED		PROBATIONER		PAROLE SERVICES		Total									
	MALE	FEMALE	MALE	FEMALE	MALE	FEMALE	MALE	FEMALE										
BLACK	103	77.44%	5	83.33%	55	57.89%	2	100.00%	13	68.42%	1	50.00%	80	74.77%	3	100.00%	262	71.39%
HISPANIC	21	15.79%	0	0.00%	26	27.37%	0	0.00%	3	15.79%	0	0.00%	20	18.69%	0	0.00%	70	19.07%
WHITE	8	6.02%	1	16.67%	11	11.58%	0	0.00%	3	15.79%	1	50.00%	7	6.54%	0	0.00%	31	8.45%
ASIAN	1	0.75%	0	0.00%	3	3.16%	0	0.00%	0	0.00%	0	0.00%	0	0.00%	0	0.00%	4	1.09%
Total	133	100.00%	6	100.00%	95	100.00%	2	100.00%	19	100.00%	2	100.00%	107	100.00%	3	100.00%	367	100.00%



Age

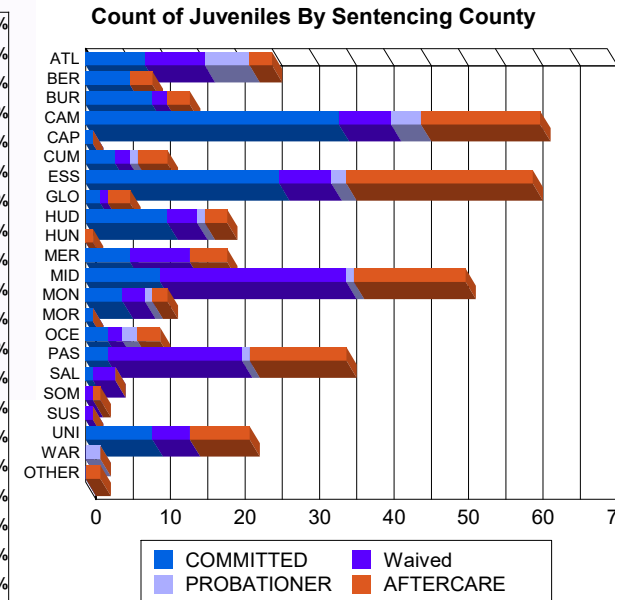
Age	MALE	FEMALE	MALE	FEMALE	MALE	FEMALE	MALE	FEMALE	MALE	FEMALE	MALE	FEMALE	MALE	FEMALE	Total			
15	8	6.02%	1	16.67%	0	0.00%	0	0.00%	7	36.84%	1	50.00%	0	0.00%	17	4.63%		
16	19	14.29%	0	0.00%	0	0.00%	0	0.00%	3	15.79%	0	0.00%	5	4.67%	27	7.36%		
17	29	21.80%	3	50.00%	6	6.32%	0	0.00%	5	26.32%	1	50.00%	6	5.61%	50	13.62%		
18	33	24.81%	1	16.67%	8	8.42%	1	50.00%	3	15.79%	0	0.00%	13	12.15%	60	16.35%		
19	22	16.54%	1	16.67%	21	22.11%	0	0.00%	1	5.26%	0	0.00%	15	14.02%	61	16.62%		
20 and Above	22	16.54%	0	0.00%	60	63.16%	1	50.00%	0	0.00%	0	0.00%	68	63.55%	152	41.42%		
Total	133	100.00%	6	100.00%	95	100.00%	2	100.00%	19	100.00%	2	100.00%	107	100.00%	3	100.00%	367	100.00%



Average Age	18.06	17.17	20.36	19.50	16.37	16.00	21.62	20.67	19.61
-------------	-------	-------	-------	-------	-------	-------	-------	-------	-------

Sentencing County

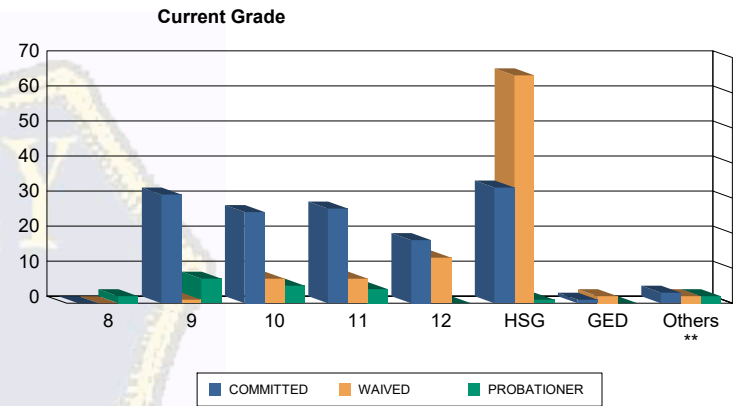
County	MALE	FEMALE	MALE	FEMALE	MALE	FEMALE	MALE	FEMALE	MALE	FEMALE	MALE	FEMALE	MALE	FEMALE	Total			
ATL	8	6.02%	0	0.00%	8	8.42%	0	0.00%	6	31.58%	0	0.00%	3	2.80%	25	6.81%		
BER	6	4.51%	0	0.00%	0	0.00%	0	0.00%	0	0.00%	0	0.00%	3	2.80%	9	2.45%		
BUR	7	5.26%	2	33.33%	2	2.11%	0	0.00%	0	0.00%	0	0.00%	3	2.80%	14	3.81%		
CAM	34	25.56%	0	0.00%	6	6.32%	1	50.00%	2	10.53%	2	100.00%	14	13.08%	61	16.62%		
CAP	1	0.75%	0	0.00%	0	0.00%	0	0.00%	0	0.00%	0	0.00%	0	0.00%	1	0.27%		
CUM	4	3.01%	0	0.00%	2	2.11%	0	0.00%	1	5.26%	0	0.00%	4	3.74%	11	3.00%		
ESS	23	17.29%	3	50.00%	7	7.37%	0	0.00%	2	10.53%	0	0.00%	25	23.36%	60	16.35%		
GLO	2	1.50%	0	0.00%	1	1.05%	0	0.00%	0	0.00%	0	0.00%	3	2.80%	6	1.63%		
HUD	10	7.52%	1	16.67%	4	4.21%	0	0.00%	1	5.26%	0	0.00%	3	2.80%	19	5.18%		
HUN	0	0.00%	0	0.00%	0	0.00%	0	0.00%	0	0.00%	0	0.00%	1	0.93%	1	0.27%		
MER	6	4.51%	0	0.00%	8	8.42%	0	0.00%	0	0.00%	0	0.00%	5	4.67%	19	5.18%		
MID	10	7.52%	0	0.00%	24	25.26%	1	50.00%	1	5.26%	0	0.00%	15	14.02%	51	13.90%		
MON	5	3.76%	0	0.00%	3	3.16%	0	0.00%	1	5.26%	0	0.00%	2	1.87%	11	3.00%		
MOR	1	0.75%	0	0.00%	0	0.00%	0	0.00%	0	0.00%	0	0.00%	0	0.00%	1	0.27%		
OCE	3	2.26%	0	0.00%	2	2.11%	0	0.00%	2	10.53%	0	0.00%	3	2.80%	10	2.72%		
PAS	3	2.26%	0	0.00%	18	18.95%	0	0.00%	1	5.26%	0	0.00%	13	12.15%	35	9.54%		
SAL	1	0.75%	0	0.00%	3	3.16%	0	0.00%	0	0.00%	0	0.00%	0	0.00%	4	1.09%		
SOM	0	0.00%	0	0.00%	1	1.05%	0	0.00%	0	0.00%	0	0.00%	0	0.00%	1	0.27%		
SUS	0	0.00%	0	0.00%	1	1.05%	0	0.00%	0	0.00%	0	0.00%	0	0.00%	1	0.27%		
UNI	9	6.77%	0	0.00%	5	5.26%	0	0.00%	0	0.00%	0	0.00%	8	7.48%	22	5.99%		
WAR	0	0.00%	0	0.00%	0	0.00%	0	0.00%	2	10.53%	0	0.00%	0	0.00%	2	0.54%		
OTHER	0	0.00%	0	0.00%	0	0.00%	0	0.00%	0	0.00%	0	0.00%	2	1.87%	2	0.54%		
Total	133	100.00%	6	100.00%	95	100.00%	2	100.00%	19	100.00%	2	100.00%	107	100.00%	3	100.00%	367	100.00%





Juvenile Demographics and Statistics

Current Grade	COMMITTED		WAIVED		PROBATIONER		Total
	MALE	FEMALE	MALE	FEMALE	MALE	FEMALE	
8	0 (0.00%)	0 (0.00%)	0 (0.00%)	0 (0.00%)	2 (10.53%)	0 (0.00%)	2 (0.78%)
9	30 (22.56%)	1 (16.67%)	1 (1.05%)	0 (0.00%)	7 (36.84%)	0 (0.00%)	39 (15.18%)
10	25 (18.80%)	1 (16.67%)	7 (7.37%)	0 (0.00%)	4 (21.05%)	1 (50.00%)	38 (14.79%)
11	24 (18.05%)	3 (50.00%)	7 (7.37%)	0 (0.00%)	3 (15.79%)	1 (50.00%)	38 (14.79%)
12	18 (13.53%)	0 (0.00%)	12 (12.63%)	1 (50.00%)	0 (0.00%)	0 (0.00%)	31 (12.06%)
HSG	32 (24.06%)	1 (16.67%)	64 (67.37%)	1 (50.00%)	1 (5.26%)	0 (0.00%)	99 (38.52%)
GED	1 (0.75%)	0 (0.00%)	2 (2.11%)	0 (0.00%)	0 (0.00%)	0 (0.00%)	3 (1.17%)
Others **	3 (2.26%)	0 (0.00%)	2 (2.11%)	0 (0.00%)	2 (10.53%)	0 (0.00%)	7 (2.72%)
Total	133 (100.00%)	6 (100.00%)	95 (100.00%)	2 (100.00%)	19 (100.00%)	2 (100.00%)	257 (100.00%)

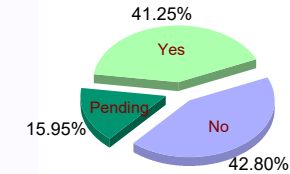


** Includes Aged Out Juveniles and Pending Records

Special Education Services

Yes	55 (41.35%)	5 (83.33%)	37 (38.95%)	1 (50.00%)	8 (42.11%)	0 (0.00%)	106 (41.25%)
No	64 (48.12%)	1 (16.67%)	33 (34.74%)	1 (50.00%)	9 (47.37%)	2 (100.00%)	110 (42.80%)
Pending	14 (10.53%)	0 (0.00%)	25 (26.32%)	0 (0.00%)	2 (10.53%)	0 (0.00%)	41 (15.95%)
Total	133 (100.00%)	6 (100.00%)	95 (100.00%)	2 (100.00%)	19 (100.00%)	2 (100.00%)	257 (100.00%)

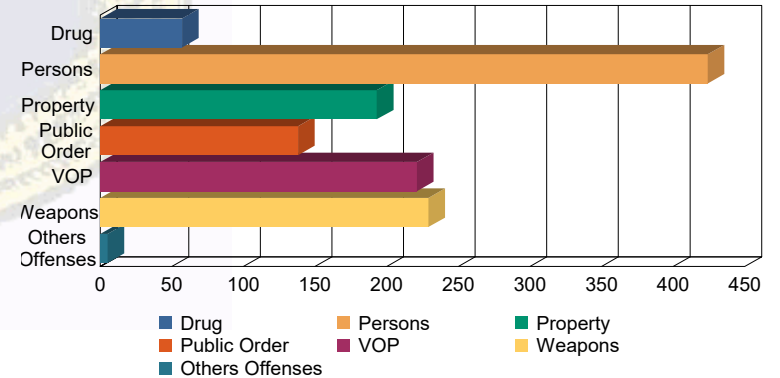
Special Education



Offense Categories

Drug	44 (5.06%)	0 (0.00%)	10 (3.38%)	0 (0.00%)	3 (4.69%)	0 (0.00%)	57 (4.50%)
Persons	238 (27.39%)	10 (34.48%)	154 (52.03%)	3 (100.00%)	18 (28.13%)	1 (16.67%)	424 (33.46%)
Property	144 (16.57%)	4 (13.79%)	32 (10.81%)	0 (0.00%)	11 (17.19%)	2 (33.33%)	193 (15.23%)
Public Order	103 (11.85%)	5 (17.24%)	21 (7.09%)	0 (0.00%)	8 (12.50%)	1 (16.67%)	138 (10.89%)
VOP	169 (19.45%)	6 (20.69%)	33 (11.15%)	0 (0.00%)	11 (17.19%)	2 (33.33%)	221 (17.44%)
Weapons	169 (19.45%)	4 (13.79%)	45 (15.20%)	0 (0.00%)	11 (17.19%)	0 (0.00%)	229 (18.07%)
Others Offenses	2 (0.23%)	0 (0.00%)	1 (0.34%)	0 (0.00%)	2 (3.13%)	0 (0.00%)	5 (0.39%)
Total *	869 (100.00%)	29 (100.00%)	296 (100.00%)	3 (100.00%)	64 (100.00%)	6 (100.00%)	1,267 (100.00%)

Offense Categories



* Juveniles may have multiple offenses