



Juvenile Demographics and Statistics

Race/ Ethnicity	COMMITTED		WAIVED		PROBATIONER		PAROLE SERVICES		Total									
	MALE	FEMALE	MALE	FEMALE	MALE	FEMALE	MALE	FEMALE										
BLACK	104	76.47%	5	83.33%	55	56.70%	2	100.00%	13	68.42%	1	50.00%	76	75.25%	3	100.00%	259	70.77%
HISPANIC	23	16.91%	0	0.00%	28	28.87%	0	0.00%	2	10.53%	0	0.00%	18	17.82%	0	0.00%	71	19.40%
WHITE	8	5.88%	1	16.67%	11	11.34%	0	0.00%	3	15.79%	1	50.00%	7	6.93%	0	0.00%	31	8.47%
ASIAN	1	0.74%	0	0.00%	3	3.09%	0	0.00%	0	0.00%	0	0.00%	0	0.00%	0	0.00%	4	1.09%
Others	0	0.00%	0	0.00%	0	0.00%	0	0.00%	1	5.26%	0	0.00%	0	0.00%	0	0.00%	1	0.27%
Total	136	100.00%	6	100.00%	97	100.00%	2	100.00%	19	100.00%	2	100.00%	101	100.00%	3	100.00%	366	100.00%

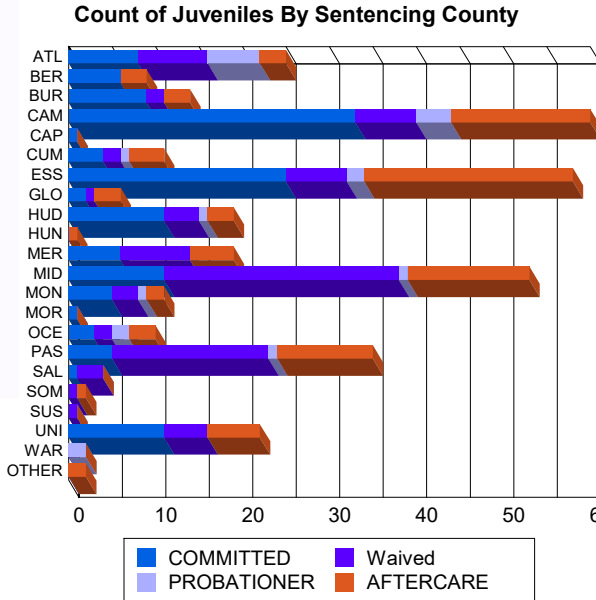
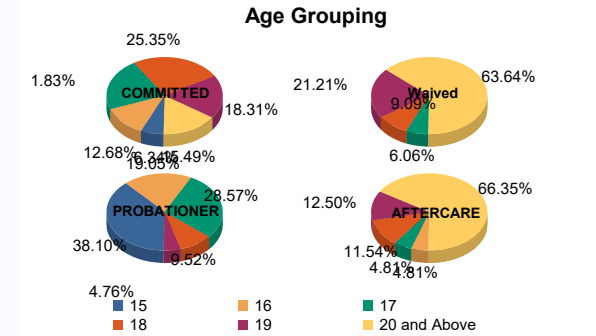
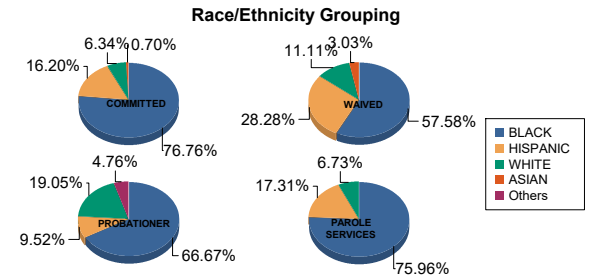
Age

15	8	5.88%	1	16.67%	0	0.00%	0	0.00%	7	36.84%	1	50.00%	0	0.00%	0	0.00%	17	4.64%
16	18	13.24%	0	0.00%	0	0.00%	0	0.00%	4	21.05%	0	0.00%	5	4.95%	0	0.00%	27	7.38%
17	28	20.59%	3	50.00%	6	6.19%	0	0.00%	5	26.32%	1	50.00%	5	4.95%	0	0.00%	48	13.11%
18	35	25.74%	1	16.67%	8	8.25%	1	50.00%	2	10.53%	0	0.00%	11	10.89%	1	33.33%	59	16.12%
19	25	18.38%	1	16.67%	21	21.65%	0	0.00%	1	5.26%	0	0.00%	12	11.88%	1	33.33%	61	16.67%
20 and Above	22	16.18%	0	0.00%	62	63.92%	1	50.00%	0	0.00%	0	0.00%	68	67.33%	1	33.33%	154	42.08%
Total	136	100.00%	6	100.00%	97	100.00%	2	100.00%	19	100.00%	2	100.00%	101	100.00%	3	100.00%	366	100.00%

Average Age	18.10	17.17	20.37	19.50	16.26	16.00	21.80	20.67	19.63
-------------	-------	-------	-------	-------	-------	-------	-------	-------	-------

Sentencing County

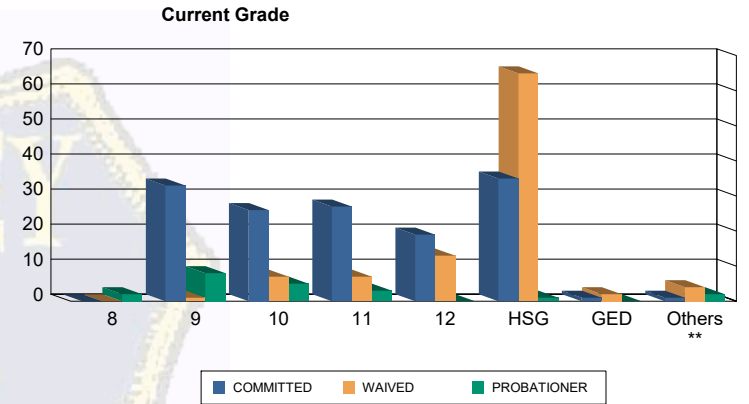
ATL	8	5.88%	0	0.00%	8	8.25%	0	0.00%	6	31.58%	0	0.00%	3	2.97%	0	0.00%	25	6.83%
BER	6	4.41%	0	0.00%	0	0.00%	0	0.00%	0	0.00%	0	0.00%	3	2.97%	0	0.00%	9	2.46%
BUR	7	5.15%	2	33.33%	2	2.06%	0	0.00%	0	0.00%	0	0.00%	3	2.97%	0	0.00%	14	3.83%
CAM	33	24.26%	0	0.00%	6	6.19%	1	50.00%	2	10.53%	2	100.00%	14	13.86%	2	66.67%	60	16.39%
CAP	1	0.74%	0	0.00%	0	0.00%	0	0.00%	0	0.00%	0	0.00%	0	0.00%	0	0.00%	1	0.27%
CUM	4	2.94%	0	0.00%	2	2.06%	0	0.00%	1	5.26%	0	0.00%	4	3.96%	0	0.00%	11	3.01%
ESS	22	16.18%	3	50.00%	7	7.22%	0	0.00%	2	10.53%	0	0.00%	24	23.76%	0	0.00%	58	15.85%
GLO	2	1.47%	0	0.00%	1	1.03%	0	0.00%	0	0.00%	0	0.00%	3	2.97%	0	0.00%	6	1.64%
HUD	10	7.35%	1	16.67%	4	4.12%	0	0.00%	1	5.26%	0	0.00%	3	2.97%	0	0.00%	19	5.19%
HUN	0	0.00%	0	0.00%	0	0.00%	0	0.00%	0	0.00%	0	0.00%	1	0.99%	0	0.00%	1	0.27%
MER	6	4.41%	0	0.00%	8	8.25%	0	0.00%	0	0.00%	0	0.00%	5	4.95%	0	0.00%	19	5.19%
MID	11	8.09%	0	0.00%	26	26.80%	1	50.00%	1	5.26%	0	0.00%	14	13.86%	0	0.00%	53	14.48%
MON	5	3.68%	0	0.00%	3	3.09%	0	0.00%	1	5.26%	0	0.00%	2	1.98%	0	0.00%	11	3.01%
MOR	1	0.74%	0	0.00%	0	0.00%	0	0.00%	0	0.00%	0	0.00%	0	0.00%	0	0.00%	1	0.27%
OCE	3	2.21%	0	0.00%	2	2.06%	0	0.00%	2	10.53%	0	0.00%	3	2.97%	0	0.00%	10	2.73%
PAS	5	3.68%	0	0.00%	18	18.56%	0	0.00%	1	5.26%	0	0.00%	11	10.89%	0	0.00%	35	9.56%
SAL	1	0.74%	0	0.00%	3	3.09%	0	0.00%	0	0.00%	0	0.00%	0	0.00%	0	0.00%	4	1.09%
SOM	0	0.00%	0	0.00%	1	1.03%	0	0.00%	0	0.00%	0	0.00%	0	0.00%	1	33.33%	2	0.55%
SUS	0	0.00%	0	0.00%	1	1.03%	0	0.00%	0	0.00%	0	0.00%	0	0.00%	0	0.00%	1	0.27%
UNI	11	8.09%	0	0.00%	5	5.15%	0	0.00%	0	0.00%	0	0.00%	6	5.94%	0	0.00%	22	6.01%
WAR	0	0.00%	0	0.00%	0	0.00%	0	0.00%	2	10.53%	0	0.00%	0	0.00%	0	0.00%	2	0.55%
OTHER	0	0.00%	0	0.00%	0	0.00%	0	0.00%	0	0.00%	0	0.00%	2	1.98%	0	0.00%	2	0.55%
Total	136	100.00%	6	100.00%	97	100.00%	2	100.00%	19	100.00%	2	100.00%	101	100.00%	3	100.00%	366	100.00%





Juvenile Demographics and Statistics

Current Grade	COMMITTED		WAIVED		PROBATIONER		Total
	MALE	FEMALE	MALE	FEMALE	MALE	FEMALE	
8	0 (0.00%)	0 (0.00%)	0 (0.00%)	0 (0.00%)	2 (10.53%)	0 (0.00%)	2 (0.76%)
9	32 (23.53%)	1 (16.67%)	1 (1.03%)	0 (0.00%)	8 (42.11%)	0 (0.00%)	42 (16.03%)
10	25 (18.38%)	1 (16.67%)	7 (7.22%)	0 (0.00%)	4 (21.05%)	1 (50.00%)	38 (14.50%)
11	24 (17.65%)	3 (50.00%)	7 (7.22%)	0 (0.00%)	2 (10.53%)	1 (50.00%)	37 (14.12%)
12	19 (13.97%)	0 (0.00%)	12 (12.37%)	1 (50.00%)	0 (0.00%)	0 (0.00%)	32 (12.21%)
HSG	34 (25.00%)	1 (16.67%)	64 (65.98%)	1 (50.00%)	1 (5.26%)	0 (0.00%)	101 (38.55%)
GED	1 (0.74%)	0 (0.00%)	2 (2.06%)	0 (0.00%)	0 (0.00%)	0 (0.00%)	3 (1.15%)
Others **	1 (0.74%)	0 (0.00%)	4 (4.12%)	0 (0.00%)	2 (10.53%)	0 (0.00%)	7 (2.67%)
Total	136 (100.00%)	6 (100.00%)	97 (100.00%)	2 (100.00%)	19 (100.00%)	2 (100.00%)	262 (100.00%)

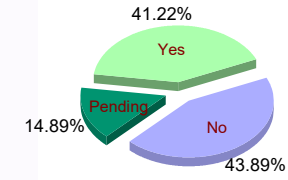


** Includes Aged Out Juveniles and Pending Records

Special Education Services

Yes	58 (42.65%)	5 (83.33%)	37 (38.14%)	1 (50.00%)	7 (36.84%)	0 (0.00%)	108 (41.22%)
No	66 (48.53%)	1 (16.67%)	35 (36.08%)	1 (50.00%)	10 (52.63%)	2 (100.00%)	115 (43.89%)
Pending	12 (8.82%)	0 (0.00%)	25 (25.77%)	0 (0.00%)	2 (10.53%)	0 (0.00%)	39 (14.89%)
Total	136 (100.00%)	6 (100.00%)	97 (100.00%)	2 (100.00%)	19 (100.00%)	2 (100.00%)	262 (100.00%)

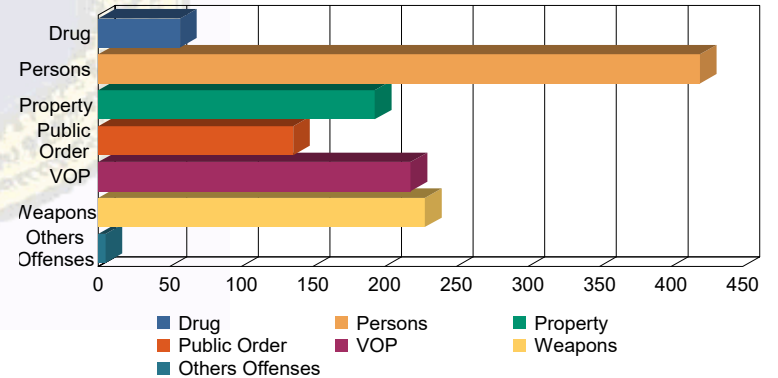
Special Education



Offense Categories

Drug	44 (5.11%)	0 (0.00%)	10 (3.34%)	0 (0.00%)	3 (5.08%)	0 (0.00%)	57 (4.53%)
Persons	234 (27.18%)	10 (34.48%)	156 (52.17%)	3 (100.00%)	16 (27.12%)	1 (16.67%)	420 (33.41%)
Property	143 (16.61%)	4 (13.79%)	32 (10.70%)	0 (0.00%)	12 (20.34%)	2 (33.33%)	193 (15.35%)
Public Order	103 (11.96%)	5 (17.24%)	21 (7.02%)	0 (0.00%)	6 (10.17%)	1 (16.67%)	136 (10.82%)
VOP	168 (19.51%)	6 (20.69%)	33 (11.04%)	0 (0.00%)	9 (15.25%)	2 (33.33%)	218 (17.34%)
Weapons	167 (19.40%)	4 (13.79%)	46 (15.38%)	0 (0.00%)	11 (18.64%)	0 (0.00%)	228 (18.14%)
Others Offenses	2 (0.23%)	0 (0.00%)	1 (0.33%)	0 (0.00%)	2 (3.39%)	0 (0.00%)	5 (0.40%)
Total *	861 (100.00%)	29 (100.00%)	299 (100.00%)	3 (100.00%)	59 (100.00%)	6 (100.00%)	1,257 (100.00%)

Offense Categories



* Juveniles may have multiple offenses