



Juvenile Demographics and Statistics

Race/ Ethnicity	COMMITTED		WAIVED		PROBATIONER		PAROLE SERVICES		Total									
	MALE	FEMALE	MALE	FEMALE	MALE	FEMALE	MALE	FEMALE										
BLACK	108	77.70%	5	83.33%	55	56.70%	2	100.00%	16	72.73%	3	75.00%	73	74.49%	3	100.00%	265	71.43%
HISPANIC	22	15.83%	0	0.00%	28	28.87%	0	0.00%	2	9.09%	0	0.00%	18	18.37%	0	0.00%	70	18.87%
WHITE	8	5.76%	1	16.67%	11	11.34%	0	0.00%	3	13.64%	1	25.00%	7	7.14%	0	0.00%	31	8.36%
ASIAN	1	0.72%	0	0.00%	3	3.09%	0	0.00%	0	0.00%	0	0.00%	0	0.00%	0	0.00%	4	1.08%
Others	0	0.00%	0	0.00%	0	0.00%	0	0.00%	1	4.55%	0	0.00%	0	0.00%	0	0.00%	1	0.27%
Total	139	100.00%	6	100.00%	97	100.00%	2	100.00%	22	100.00%	4	100.00%	98	100.00%	3	100.00%	371	100.00%

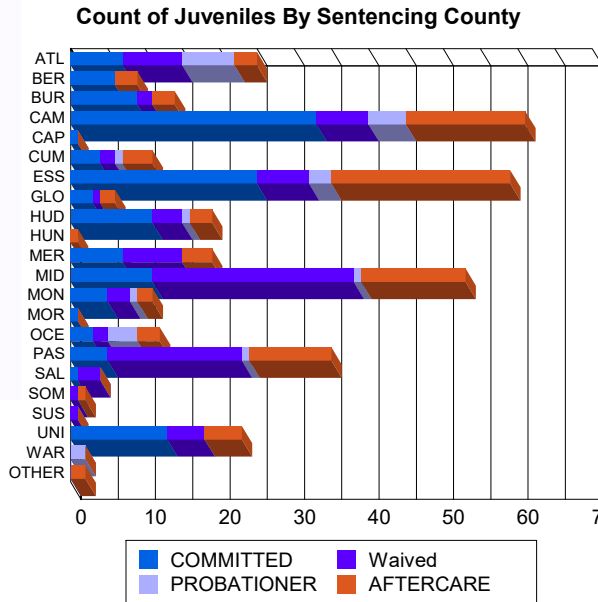
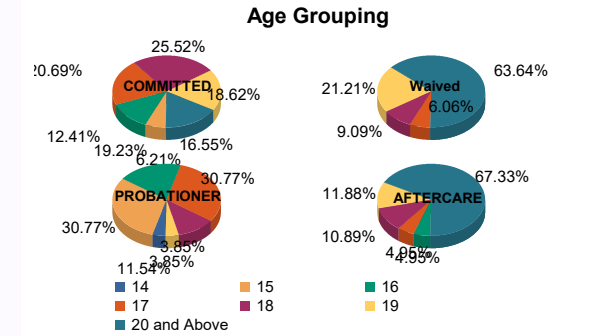
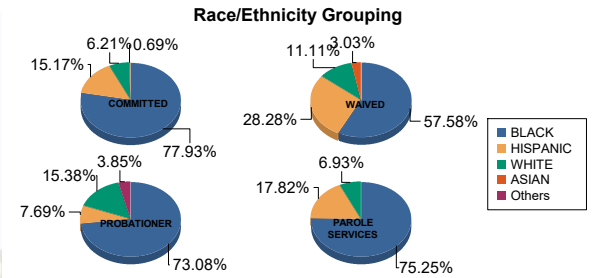
Age

14	0	0.00%	0	0.00%	0	0.00%	0	0.00%	0	0.00%	1	25.00%	0	0.00%	0	0.00%	1	0.27%
15	8	5.76%	1	16.67%	0	0.00%	0	0.00%	7	31.82%	1	25.00%	0	0.00%	0	0.00%	17	4.58%
16	18	12.95%	0	0.00%	0	0.00%	0	0.00%	4	18.18%	1	25.00%	5	5.10%	0	0.00%	28	7.55%
17	27	19.42%	3	50.00%	6	6.19%	0	0.00%	7	31.82%	1	25.00%	5	5.10%	0	0.00%	49	13.21%
18	36	25.90%	1	16.67%	8	8.25%	1	50.00%	3	13.64%	0	0.00%	10	10.20%	1	33.33%	60	16.17%
19	26	18.71%	1	16.67%	21	21.65%	0	0.00%	1	4.55%	0	0.00%	11	11.22%	1	33.33%	61	16.44%
20 and Above	24	17.27%	0	0.00%	62	63.92%	1	50.00%	0	0.00%	0	0.00%	67	68.37%	1	33.33%	155	41.78%
Total	139	100.00%	6	100.00%	97	100.00%	2	100.00%	22	100.00%	4	100.00%	98	100.00%	3	100.00%	371	100.00%

Average Age	18.15	17.17	20.37	19.50	16.41	15.50	21.89	20.67	19.60
-------------	-------	-------	-------	-------	-------	-------	-------	-------	-------

Sentencing County

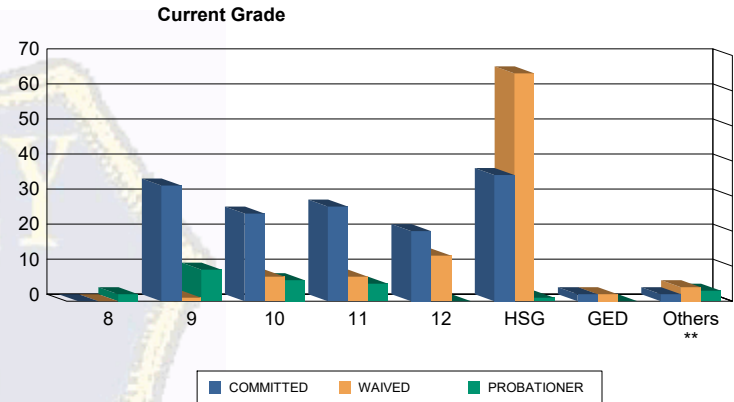
ATL	7	5.04%	0	0.00%	8	8.25%	0	0.00%	6	27.27%	1	25.00%	3	3.06%	0	0.00%	25	6.74%
BER	6	4.32%	0	0.00%	0	0.00%	0	0.00%	0	0.00%	0	0.00%	3	3.06%	0	0.00%	9	2.43%
BUR	7	5.04%	2	33.33%	2	2.06%	0	0.00%	0	0.00%	0	0.00%	3	3.06%	0	0.00%	14	3.77%
CAM	33	23.74%	0	0.00%	6	6.19%	1	50.00%	2	9.09%	3	75.00%	14	14.29%	2	66.67%	61	16.44%
CAP	1	0.72%	0	0.00%	0	0.00%	0	0.00%	0	0.00%	0	0.00%	0	0.00%	0	0.00%	1	0.27%
CUM	4	2.88%	0	0.00%	2	2.06%	0	0.00%	1	4.55%	0	0.00%	4	4.08%	0	0.00%	11	2.96%
ESS	22	15.83%	3	50.00%	7	7.22%	0	0.00%	3	13.64%	0	0.00%	24	24.49%	0	0.00%	59	15.90%
GLO	3	2.16%	0	0.00%	1	1.03%	0	0.00%	0	0.00%	0	0.00%	2	2.04%	0	0.00%	6	1.62%
HUD	10	7.19%	1	16.67%	4	4.12%	0	0.00%	1	4.55%	0	0.00%	3	3.06%	0	0.00%	19	5.12%
HUN	0	0.00%	0	0.00%	0	0.00%	0	0.00%	0	0.00%	0	0.00%	1	1.02%	0	0.00%	1	0.27%
MER	7	5.04%	0	0.00%	8	8.25%	0	0.00%	0	0.00%	0	0.00%	4	4.08%	0	0.00%	19	5.12%
MID	11	7.91%	0	0.00%	26	26.80%	1	50.00%	1	4.55%	0	0.00%	14	14.29%	0	0.00%	53	14.29%
MON	5	3.60%	0	0.00%	3	3.09%	0	0.00%	1	4.55%	0	0.00%	2	2.04%	0	0.00%	11	2.96%
MOR	1	0.72%	0	0.00%	0	0.00%	0	0.00%	0	0.00%	0	0.00%	0	0.00%	0	0.00%	1	0.27%
OCE	3	2.16%	0	0.00%	2	2.06%	0	0.00%	4	18.18%	0	0.00%	3	3.06%	0	0.00%	12	3.23%
PAS	5	3.60%	0	0.00%	18	18.56%	0	0.00%	1	4.55%	0	0.00%	11	11.22%	0	0.00%	35	9.43%
SAL	1	0.72%	0	0.00%	3	3.09%	0	0.00%	0	0.00%	0	0.00%	0	0.00%	0	0.00%	4	1.08%
SOM	0	0.00%	0	0.00%	1	1.03%	0	0.00%	0	0.00%	0	0.00%	0	0.00%	1	33.33%	2	0.54%
SUS	0	0.00%	0	0.00%	1	1.03%	0	0.00%	0	0.00%	0	0.00%	0	0.00%	0	0.00%	1	0.27%
UNI	13	9.35%	0	0.00%	5	5.15%	0	0.00%	0	0.00%	0	0.00%	5	5.10%	0	0.00%	23	6.20%
WAR	0	0.00%	0	0.00%	0	0.00%	0	0.00%	2	9.09%	0	0.00%	0	0.00%	0	0.00%	2	0.54%
OTHER	0	0.00%	0	0.00%	0	0.00%	0	0.00%	0	0.00%	0	0.00%	2	2.04%	0	0.00%	2	0.54%
Total	139	100.00%	6	100.00%	97	100.00%	2	100.00%	22	100.00%	4	100.00%	98	100.00%	3	100.00%	371	100.00%





Juvenile Demographics and Statistics

Current Grade	COMMITTED		WAIVED		PROBATIONER		Total
	MALE	FEMALE	MALE	FEMALE	MALE	FEMALE	
8	0 (0.00%)	0 (0.00%)	0 (0.00%)	0 (0.00%)	1 (4.55%)	1 (25.00%)	2 (0.74%)
9	32 (23.02%)	1 (16.67%)	1 (1.03%)	0 (0.00%)	8 (36.36%)	1 (25.00%)	43 (15.93%)
10	24 (17.27%)	1 (16.67%)	7 (7.22%)	0 (0.00%)	5 (22.73%)	1 (25.00%)	38 (14.07%)
11	24 (17.27%)	3 (50.00%)	7 (7.22%)	0 (0.00%)	4 (18.18%)	1 (25.00%)	39 (14.44%)
12	20 (14.39%)	0 (0.00%)	12 (12.37%)	1 (50.00%)	0 (0.00%)	0 (0.00%)	33 (12.22%)
HSG	35 (25.18%)	1 (16.67%)	64 (65.98%)	1 (50.00%)	1 (4.55%)	0 (0.00%)	102 (37.78%)
GED	2 (1.44%)	0 (0.00%)	2 (2.06%)	0 (0.00%)	0 (0.00%)	0 (0.00%)	4 (1.48%)
Others **	2 (1.44%)	0 (0.00%)	4 (4.12%)	0 (0.00%)	3 (13.64%)	0 (0.00%)	9 (3.33%)
Total	139 (100.00%)	6 (100.00%)	97 (100.00%)	2 (100.00%)	22 (100.00%)	4 (100.00%)	270 (100.00%)

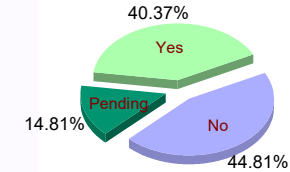


** Includes Aged Out Juveniles and Pending Records

Special Education Services

Yes	58 (41.73%)	5 (83.33%)	37 (38.14%)	1 (50.00%)	8 (36.36%)	0 (0.00%)	109 (40.37%)
No	69 (49.64%)	1 (16.67%)	35 (36.08%)	1 (50.00%)	11 (50.00%)	4 (100.00%)	121 (44.81%)
Pending	12 (8.63%)	0 (0.00%)	25 (25.77%)	0 (0.00%)	3 (13.64%)	0 (0.00%)	40 (14.81%)
Total	139 (100.00%)	6 (100.00%)	97 (100.00%)	2 (100.00%)	22 (100.00%)	4 (100.00%)	270 (100.00%)

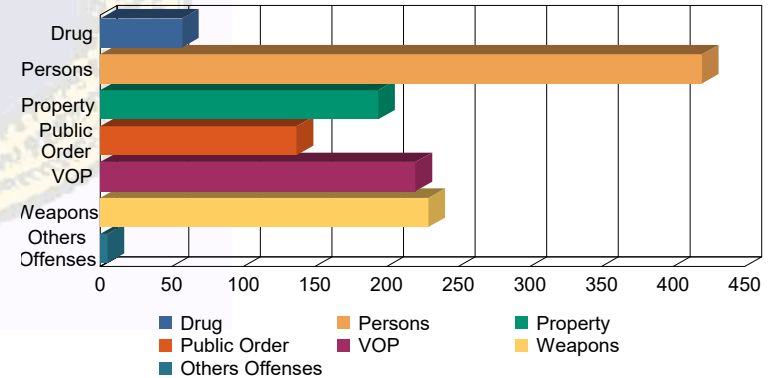
Special Education



Offense Categories

Drug	44 (5.18%)	0 (0.00%)	10 (3.34%)	0 (0.00%)	3 (4.35%)	0 (0.00%)	57 (4.52%)
Persons	230 (27.06%)	10 (34.48%)	156 (52.17%)	3 (100.00%)	20 (28.99%)	1 (8.33%)	420 (33.28%)
Property	140 (16.47%)	4 (13.79%)	32 (10.70%)	0 (0.00%)	15 (21.74%)	3 (25.00%)	194 (15.37%)
Public Order	102 (12.00%)	5 (17.24%)	21 (7.02%)	0 (0.00%)	6 (8.70%)	3 (25.00%)	137 (10.86%)
VOP	167 (19.65%)	6 (20.69%)	33 (11.04%)	0 (0.00%)	10 (14.49%)	4 (33.33%)	220 (17.43%)
Weapons	165 (19.41%)	4 (13.79%)	46 (15.38%)	0 (0.00%)	13 (18.84%)	1 (8.33%)	229 (18.15%)
Others Offenses	2 (0.24%)	0 (0.00%)	1 (0.33%)	0 (0.00%)	2 (2.90%)	0 (0.00%)	5 (0.40%)
Total *	850 (100.00%)	29 (100.00%)	299 (100.00%)	3 (100.00%)	69 (100.00%)	12 (100.00%)	1,262 (100.00%)

Offense Categories



* Juveniles may have multiple offenses