



Juvenile Demographics and Statistics

Race/ Ethnicity	COMMITTED		WAIVED		PROBATIONER		PAROLE SERVICES		Total									
	MALE	FEMALE	MALE	FEMALE	MALE	FEMALE	MALE	FEMALE										
BLACK	106	77.37%	5	83.33%	55	56.12%	2	100.00%	14	70.00%	3	75.00%	73	75.26%	3	100.00%	261	71.12%
HISPANIC	23	16.79%	0	0.00%	29	29.59%	0	0.00%	2	10.00%	0	0.00%	17	17.53%	0	0.00%	71	19.35%
WHITE	7	5.11%	1	16.67%	11	11.22%	0	0.00%	3	15.00%	1	25.00%	7	7.22%	0	0.00%	30	8.17%
ASIAN	1	0.73%	0	0.00%	3	3.06%	0	0.00%	0	0.00%	0	0.00%	0	0.00%	0	0.00%	4	1.09%
Others	0	0.00%	0	0.00%	0	0.00%	0	0.00%	1	5.00%	0	0.00%	0	0.00%	0	0.00%	1	0.27%
Total	137	100.00%	6	100.00%	98	100.00%	2	100.00%	20	100.00%	4	100.00%	97	100.00%	3	100.00%	367	100.00%

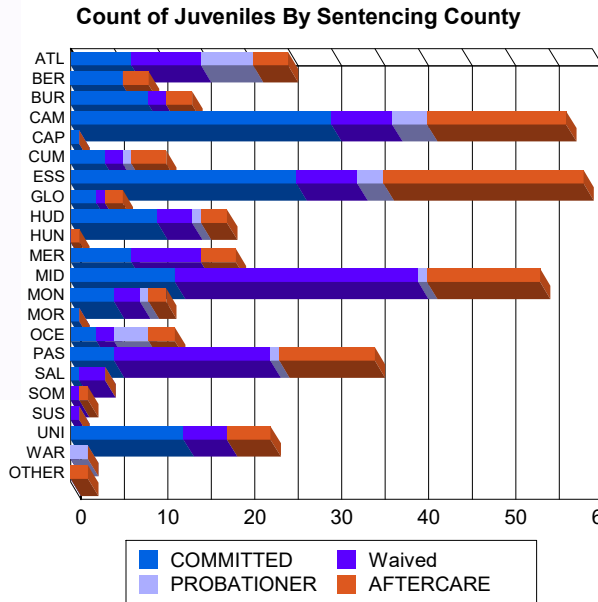
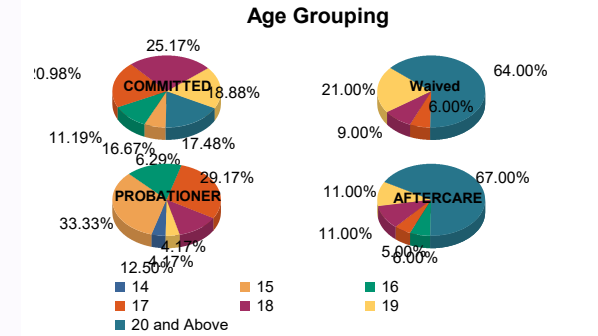
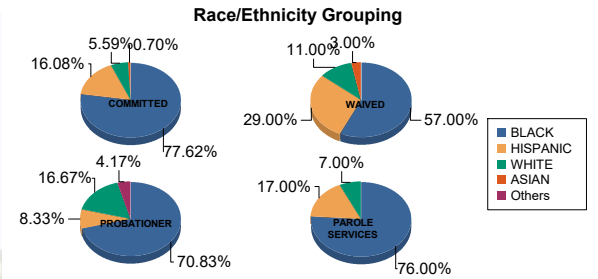
Age

14	0	0.00%	0	0.00%	0	0.00%	0	0.00%	0	0.00%	1	25.00%	0	0.00%	0	0.00%	1	0.27%
15	8	5.84%	1	16.67%	0	0.00%	0	0.00%	7	35.00%	1	25.00%	0	0.00%	0	0.00%	17	4.63%
16	16	11.68%	0	0.00%	0	0.00%	0	0.00%	3	15.00%	1	25.00%	6	6.19%	0	0.00%	26	7.08%
17	27	19.71%	3	50.00%	6	6.12%	0	0.00%	6	30.00%	1	25.00%	5	5.15%	0	0.00%	48	13.08%
18	35	25.55%	1	16.67%	8	8.16%	1	50.00%	3	15.00%	0	0.00%	10	10.31%	1	33.33%	59	16.08%
19	26	18.98%	1	16.67%	21	21.43%	0	0.00%	1	5.00%	0	0.00%	10	10.31%	1	33.33%	60	16.35%
20 and Above	25	18.25%	0	0.00%	63	64.29%	1	50.00%	0	0.00%	0	0.00%	66	68.04%	1	33.33%	156	42.51%
Total	137	100.00%	6	100.00%	98	100.00%	2	100.00%	20	100.00%	4	100.00%	97	100.00%	3	100.00%	367	100.00%

Average Age	18.20	17.17	20.38	19.50	16.40	15.50	21.87	20.67	19.63
-------------	-------	-------	-------	-------	-------	-------	-------	-------	-------

Sentencing County

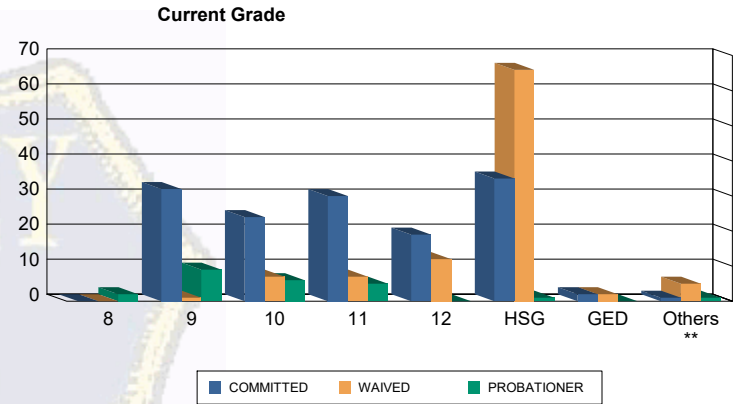
ATL	7	5.11%	0	0.00%	8	8.16%	0	0.00%	5	25.00%	1	25.00%	4	4.12%	0	0.00%	25	6.81%
BER	6	4.38%	0	0.00%	0	0.00%	0	0.00%	0	0.00%	0	0.00%	3	3.09%	0	0.00%	9	2.45%
BUR	7	5.11%	2	33.33%	2	2.04%	0	0.00%	0	0.00%	0	0.00%	3	3.09%	0	0.00%	14	3.81%
CAM	30	21.90%	0	0.00%	6	6.12%	1	50.00%	1	5.00%	3	75.00%	14	14.43%	2	66.67%	57	15.53%
CAP	1	0.73%	0	0.00%	0	0.00%	0	0.00%	0	0.00%	0	0.00%	0	0.00%	0	0.00%	1	0.27%
CUM	4	2.92%	0	0.00%	2	2.04%	0	0.00%	1	5.00%	0	0.00%	4	4.12%	0	0.00%	11	3.00%
ESS	23	16.79%	3	50.00%	7	7.14%	0	0.00%	3	15.00%	0	0.00%	23	23.71%	0	0.00%	59	16.08%
GLO	3	2.19%	0	0.00%	1	1.02%	0	0.00%	0	0.00%	0	0.00%	2	2.06%	0	0.00%	6	1.63%
HUD	9	6.57%	1	16.67%	4	4.08%	0	0.00%	1	5.00%	0	0.00%	3	3.09%	0	0.00%	18	4.90%
HUN	0	0.00%	0	0.00%	0	0.00%	0	0.00%	0	0.00%	0	0.00%	1	1.03%	0	0.00%	1	0.27%
MER	7	5.11%	0	0.00%	8	8.16%	0	0.00%	0	0.00%	0	0.00%	4	4.12%	0	0.00%	19	5.18%
MID	12	8.76%	0	0.00%	27	27.55%	1	50.00%	1	5.00%	0	0.00%	13	13.40%	0	0.00%	54	14.71%
MON	5	3.65%	0	0.00%	3	3.06%	0	0.00%	1	5.00%	0	0.00%	2	2.06%	0	0.00%	11	3.00%
MOR	1	0.73%	0	0.00%	0	0.00%	0	0.00%	0	0.00%	0	0.00%	0	0.00%	0	0.00%	1	0.27%
OCE	3	2.19%	0	0.00%	2	2.04%	0	0.00%	4	20.00%	0	0.00%	3	3.09%	0	0.00%	12	3.27%
PAS	5	3.65%	0	0.00%	18	18.37%	0	0.00%	1	5.00%	0	0.00%	11	11.34%	0	0.00%	35	9.54%
SAL	1	0.73%	0	0.00%	3	3.06%	0	0.00%	0	0.00%	0	0.00%	0	0.00%	0	0.00%	4	1.09%
SOM	0	0.00%	0	0.00%	1	1.02%	0	0.00%	0	0.00%	0	0.00%	0	0.00%	1	33.33%	2	0.54%
SUS	0	0.00%	0	0.00%	1	1.02%	0	0.00%	0	0.00%	0	0.00%	0	0.00%	0	0.00%	1	0.27%
UNI	13	9.49%	0	0.00%	5	5.10%	0	0.00%	0	0.00%	0	0.00%	5	5.15%	0	0.00%	23	6.27%
WAR	0	0.00%	0	0.00%	0	0.00%	0	0.00%	2	10.00%	0	0.00%	0	0.00%	0	0.00%	2	0.54%
OTHER	0	0.00%	0	0.00%	0	0.00%	0	0.00%	0	0.00%	0	0.00%	2	2.06%	0	0.00%	2	0.54%
Total	137	100.00%	6	100.00%	98	100.00%	2	100.00%	20	100.00%	4	100.00%	97	100.00%	3	100.00%	367	100.00%





Juvenile Demographics and Statistics

Current Grade	COMMITTED		WAIVED		PROBATIONER		Total
	MALE	FEMALE	MALE	FEMALE	MALE	FEMALE	
8	0 (0.00%)	0 (0.00%)	0 (0.00%)	0 (0.00%)	1 (5.00%)	1 (25.00%)	2 (0.75%)
9	31 (22.63%)	1 (16.67%)	1 (1.02%)	0 (0.00%)	8 (40.00%)	1 (25.00%)	42 (15.73%)
10	23 (16.79%)	1 (16.67%)	7 (7.14%)	0 (0.00%)	5 (25.00%)	1 (25.00%)	37 (13.86%)
11	27 (19.71%)	3 (50.00%)	7 (7.14%)	0 (0.00%)	4 (20.00%)	1 (25.00%)	42 (15.73%)
12	19 (13.87%)	0 (0.00%)	11 (11.22%)	1 (50.00%)	0 (0.00%)	0 (0.00%)	31 (11.61%)
HSG	34 (24.82%)	1 (16.67%)	65 (66.33%)	1 (50.00%)	1 (5.00%)	0 (0.00%)	102 (38.20%)
GED	2 (1.46%)	0 (0.00%)	2 (2.04%)	0 (0.00%)	0 (0.00%)	0 (0.00%)	4 (1.50%)
Others **	1 (0.73%)	0 (0.00%)	5 (5.10%)	0 (0.00%)	1 (5.00%)	0 (0.00%)	7 (2.62%)
Total	137 (100.00%)	6 (100.00%)	98 (100.00%)	2 (100.00%)	20 (100.00%)	4 (100.00%)	267 (100.00%)

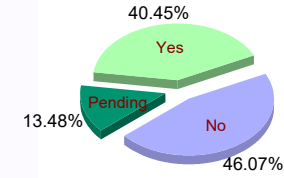


** Includes Aged Out Juveniles and Pending Records

Special Education Services

Yes	57 (41.61%)	5 (83.33%)	37 (37.76%)	1 (50.00%)	8 (40.00%)	0 (0.00%)	108 (40.45%)
No	71 (51.82%)	1 (16.67%)	35 (35.71%)	1 (50.00%)	11 (55.00%)	4 (100.00%)	123 (46.07%)
Pending	9 (6.57%)	0 (0.00%)	26 (26.53%)	0 (0.00%)	1 (5.00%)	0 (0.00%)	36 (13.48%)
Total	137 (100.00%)	6 (100.00%)	98 (100.00%)	2 (100.00%)	20 (100.00%)	4 (100.00%)	267 (100.00%)

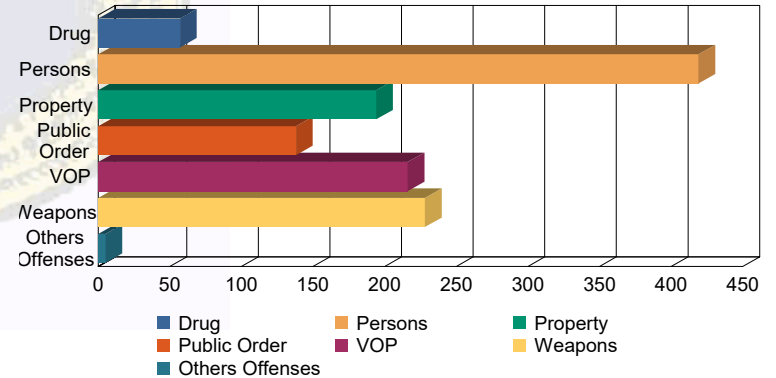
Special Education



Offense Categories

Drug	44 (5.21%)	0 (0.00%)	10 (3.34%)	0 (0.00%)	3 (4.35%)	0 (0.00%)	57 (4.53%)
Persons	229 (27.10%)	10 (34.48%)	156 (52.17%)	3 (100.00%)	20 (28.99%)	1 (8.33%)	419 (33.33%)
Property	140 (16.57%)	4 (13.79%)	32 (10.70%)	0 (0.00%)	15 (21.74%)	3 (25.00%)	194 (15.43%)
Public Order	103 (12.19%)	5 (17.24%)	21 (7.02%)	0 (0.00%)	6 (8.70%)	3 (25.00%)	138 (10.98%)
VOP	163 (19.29%)	6 (20.69%)	33 (11.04%)	0 (0.00%)	10 (14.49%)	4 (33.33%)	216 (17.18%)
Weapons	164 (19.41%)	4 (13.79%)	46 (15.38%)	0 (0.00%)	13 (18.84%)	1 (8.33%)	228 (18.14%)
Others Offenses	2 (0.24%)	0 (0.00%)	1 (0.33%)	0 (0.00%)	2 (2.90%)	0 (0.00%)	5 (0.40%)
Total *	845 (100.00%)	29 (100.00%)	299 (100.00%)	3 (100.00%)	69 (100.00%)	12 (100.00%)	1,257 (100.00%)

Offense Categories



* Juveniles may have multiple offenses