



Juvenile Demographics and Statistics

Race/ Ethnicity	COMMITTED		WAIVED		PROBATIONER		PAROLE SERVICES		Total									
	MALE	FEMALE	MALE	FEMALE	MALE	FEMALE	MALE	FEMALE										
BLACK	102	77.27%	5	83.33%	55	56.70%	2	100.00%	17	73.91%	3	75.00%	81	77.14%	4	100.00%	269	72.12%
HISPANIC	22	16.67%	0	0.00%	28	28.87%	0	0.00%	2	8.70%	0	0.00%	17	16.19%	0	0.00%	69	18.50%
WHITE	7	5.30%	1	16.67%	11	11.34%	0	0.00%	3	13.04%	1	25.00%	7	6.67%	0	0.00%	30	8.04%
ASIAN	1	0.76%	0	0.00%	3	3.09%	0	0.00%	0	0.00%	0	0.00%	0	0.00%	0	0.00%	4	1.07%
Others	0	0.00%	0	0.00%	0	0.00%	0	0.00%	1	4.35%	0	0.00%	0	0.00%	0	0.00%	1	0.27%
<b>Total</b>	<b>132</b>	<b>100.00%</b>	<b>6</b>	<b>100.00%</b>	<b>97</b>	<b>100.00%</b>	<b>2</b>	<b>100.00%</b>	<b>23</b>	<b>100.00%</b>	<b>4</b>	<b>100.00%</b>	<b>105</b>	<b>100.00%</b>	<b>4</b>	<b>100.00%</b>	<b>373</b>	<b>100.00%</b>

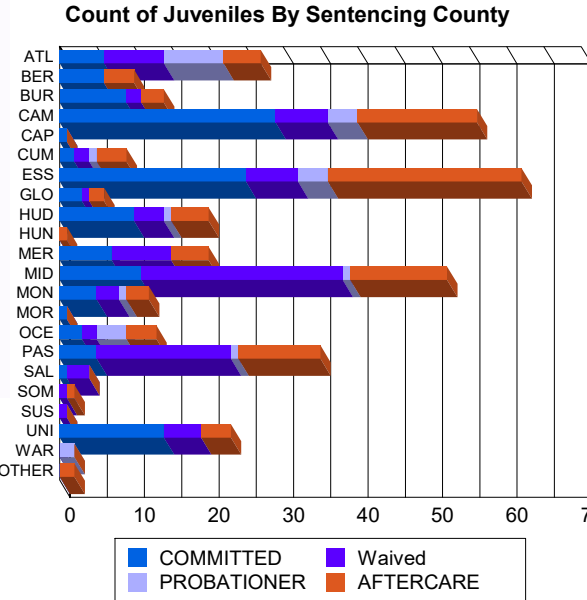
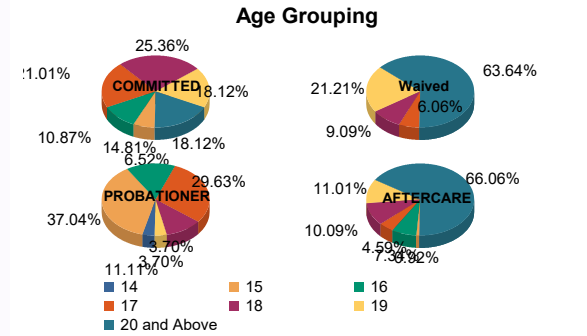
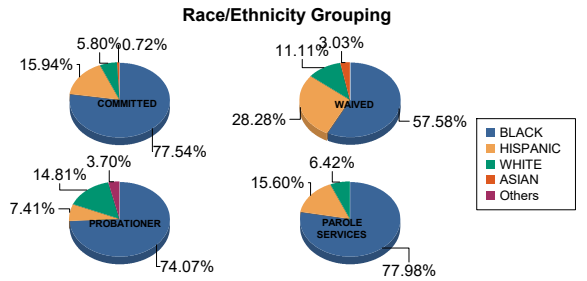
Age

14	0	0.00%	0	0.00%	0	0.00%	0	0.00%	0	0.00%	1	25.00%	0	0.00%	0	0.00%	1	0.27%
15	8	6.06%	1	16.67%	0	0.00%	0	0.00%	9	39.13%	1	25.00%	0	0.00%	1	25.00%	20	5.36%
16	15	11.36%	0	0.00%	0	0.00%	0	0.00%	3	13.04%	1	25.00%	8	7.62%	0	0.00%	27	7.24%
17	26	19.70%	3	50.00%	6	6.19%	0	0.00%	7	30.43%	1	25.00%	5	4.76%	0	0.00%	48	12.87%
18	34	25.76%	1	16.67%	8	8.25%	1	50.00%	3	13.04%	0	0.00%	10	9.52%	1	25.00%	58	15.55%
19	24	18.18%	1	16.67%	21	21.65%	0	0.00%	1	4.35%	0	0.00%	11	10.48%	1	25.00%	59	15.82%
20 and Above	25	18.94%	0	0.00%	62	63.92%	1	50.00%	0	0.00%	0	0.00%	71	67.62%	1	25.00%	160	42.90%
<b>Total</b>	<b>132</b>	<b>100.00%</b>	<b>6</b>	<b>100.00%</b>	<b>97</b>	<b>100.00%</b>	<b>2</b>	<b>100.00%</b>	<b>23</b>	<b>100.00%</b>	<b>4</b>	<b>100.00%</b>	<b>105</b>	<b>100.00%</b>	<b>4</b>	<b>100.00%</b>	<b>373</b>	<b>100.00%</b>

Average Age	18.22	17.17	20.38	19.50	16.30	15.50	21.70	19.25	19.61
-------------	-------	-------	-------	-------	-------	-------	-------	-------	-------

Sentencing County

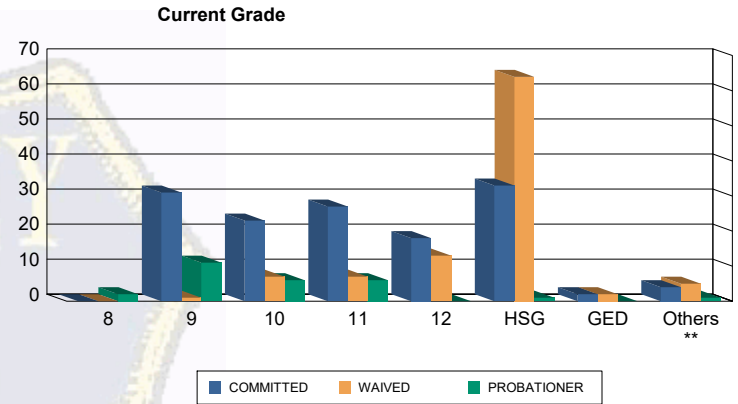
ATL	6	4.55%	0	0.00%	8	8.25%	0	0.00%	7	30.43%	1	25.00%	5	4.76%	0	0.00%	27	7.24%
BER	6	4.55%	0	0.00%	0	0.00%	0	0.00%	0	0.00%	0	0.00%	4	3.81%	0	0.00%	10	2.68%
BUR	7	5.30%	2	33.33%	2	2.06%	0	0.00%	0	0.00%	0	0.00%	3	2.86%	0	0.00%	14	3.75%
CAM	29	21.97%	0	0.00%	6	6.19%	1	50.00%	1	4.35%	3	75.00%	14	13.33%	2	50.00%	56	15.01%
CAP	1	0.76%	0	0.00%	0	0.00%	0	0.00%	0	0.00%	0	0.00%	0	0.00%	0	0.00%	1	0.27%
CUM	2	1.52%	0	0.00%	2	2.06%	0	0.00%	1	4.35%	0	0.00%	4	3.81%	0	0.00%	9	2.41%
ESS	22	16.67%	3	50.00%	7	7.22%	0	0.00%	4	17.39%	0	0.00%	26	24.76%	0	0.00%	62	16.62%
GLO	3	2.27%	0	0.00%	1	1.03%	0	0.00%	0	0.00%	0	0.00%	2	1.90%	0	0.00%	6	1.61%
HUD	9	6.82%	1	16.67%	4	4.12%	0	0.00%	1	4.35%	0	0.00%	5	4.76%	0	0.00%	20	5.36%
HUN	0	0.00%	0	0.00%	0	0.00%	0	0.00%	0	0.00%	0	0.00%	1	0.95%	0	0.00%	1	0.27%
MER	7	5.30%	0	0.00%	8	8.25%	0	0.00%	0	0.00%	0	0.00%	5	4.76%	0	0.00%	20	5.36%
MID	11	8.33%	0	0.00%	26	26.80%	1	50.00%	1	4.35%	0	0.00%	13	12.38%	0	0.00%	52	13.94%
MON	5	3.79%	0	0.00%	3	3.09%	0	0.00%	1	4.35%	0	0.00%	3	2.86%	0	0.00%	12	3.22%
MOR	1	0.76%	0	0.00%	0	0.00%	0	0.00%	0	0.00%	0	0.00%	0	0.00%	0	0.00%	1	0.27%
OCE	3	2.27%	0	0.00%	2	2.06%	0	0.00%	4	17.39%	0	0.00%	3	2.86%	1	25.00%	13	3.49%
PAS	5	3.79%	0	0.00%	18	18.56%	0	0.00%	1	4.35%	0	0.00%	11	10.48%	0	0.00%	35	9.38%
SAL	1	0.76%	0	0.00%	3	3.09%	0	0.00%	0	0.00%	0	0.00%	0	0.00%	0	0.00%	4	1.07%
SOM	0	0.00%	0	0.00%	1	1.03%	0	0.00%	0	0.00%	0	0.00%	0	0.00%	1	25.00%	2	0.54%
SUS	0	0.00%	0	0.00%	1	1.03%	0	0.00%	0	0.00%	0	0.00%	0	0.00%	0	0.00%	1	0.27%
UNI	14	10.61%	0	0.00%	5	5.15%	0	0.00%	0	0.00%	0	0.00%	4	3.81%	0	0.00%	23	6.17%
WAR	0	0.00%	0	0.00%	0	0.00%	0	0.00%	2	8.70%	0	0.00%	0	0.00%	0	0.00%	2	0.54%
OTHER	0	0.00%	0	0.00%	0	0.00%	0	0.00%	0	0.00%	0	0.00%	2	1.90%	0	0.00%	2	0.54%
<b>Total</b>	<b>132</b>	<b>100.00%</b>	<b>6</b>	<b>100.00%</b>	<b>97</b>	<b>100.00%</b>	<b>2</b>	<b>100.00%</b>	<b>23</b>	<b>100.00%</b>	<b>4</b>	<b>100.00%</b>	<b>105</b>	<b>100.00%</b>	<b>4</b>	<b>100.00%</b>	<b>373</b>	<b>100.00%</b>





Juvenile Demographics and Statistics

Current Grade	COMMITTED		WAIVED		PROBATIONER		Total
	MALE	FEMALE	MALE	FEMALE	MALE	FEMALE	
8	0 (0.00%)	0 (0.00%)	0 (0.00%)	0 (0.00%)	1 (4.35%)	1 (25.00%)	2 (0.76%)
9	30 (22.73%)	1 (16.67%)	1 (1.03%)	0 (0.00%)	10 (43.48%)	1 (25.00%)	43 (16.29%)
10	22 (16.67%)	1 (16.67%)	7 (7.22%)	0 (0.00%)	5 (21.74%)	1 (25.00%)	36 (13.64%)
11	24 (18.18%)	3 (50.00%)	7 (7.22%)	0 (0.00%)	5 (21.74%)	1 (25.00%)	40 (15.15%)
12	17 (12.88%)	1 (16.67%)	12 (12.37%)	1 (50.00%)	0 (0.00%)	0 (0.00%)	31 (11.74%)
HSG	33 (25.00%)	0 (0.00%)	63 (64.95%)	1 (50.00%)	1 (4.35%)	0 (0.00%)	98 (37.12%)
GED	2 (1.52%)	0 (0.00%)	2 (2.06%)	0 (0.00%)	0 (0.00%)	0 (0.00%)	4 (1.52%)
Others **	4 (3.03%)	0 (0.00%)	5 (5.15%)	0 (0.00%)	1 (4.35%)	0 (0.00%)	10 (3.79%)
<b>Total</b>	<b>132 (100.00%)</b>	<b>6 (100.00%)</b>	<b>97 (100.00%)</b>	<b>2 (100.00%)</b>	<b>23 (100.00%)</b>	<b>4 (100.00%)</b>	<b>264 (100.00%)</b>

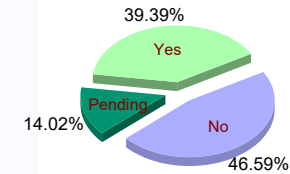


\*\* Includes Aged Out Juveniles and Pending Records

**Special Education Services**

Yes	53 (40.15%)	5 (83.33%)	37 (38.14%)	1 (50.00%)	8 (34.78%)	0 (0.00%)	104 (39.39%)
No	68 (51.52%)	1 (16.67%)	35 (36.08%)	1 (50.00%)	14 (60.87%)	4 (100.00%)	123 (46.59%)
Pending	11 (8.33%)	0 (0.00%)	25 (25.77%)	0 (0.00%)	1 (4.35%)	0 (0.00%)	37 (14.02%)
<b>Total</b>	<b>132 (100.00%)</b>	<b>6 (100.00%)</b>	<b>97 (100.00%)</b>	<b>2 (100.00%)</b>	<b>23 (100.00%)</b>	<b>4 (100.00%)</b>	<b>264 (100.00%)</b>

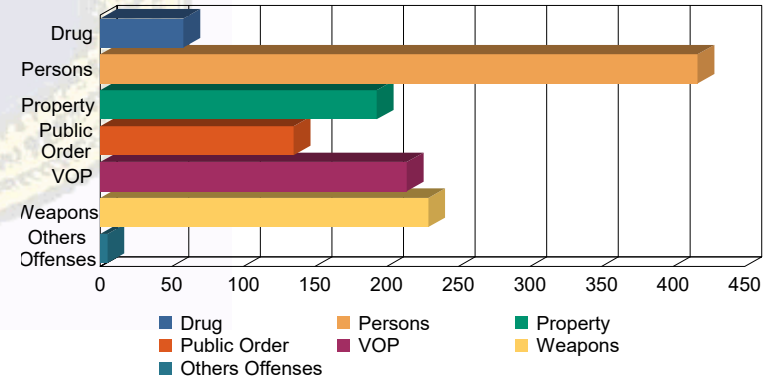
**Special Education**



**Offense Categories**

Drug	45 (5.40%)	0 (0.00%)	10 (3.36%)	0 (0.00%)	3 (4.11%)	0 (0.00%)	58 (4.64%)
Persons	226 (27.10%)	10 (32.26%)	155 (52.01%)	3 (100.00%)	22 (30.14%)	1 (8.33%)	417 (33.33%)
Property	137 (16.43%)	5 (16.13%)	32 (10.74%)	0 (0.00%)	16 (21.92%)	3 (25.00%)	193 (15.43%)
Public Order	100 (11.99%)	6 (19.35%)	21 (7.05%)	0 (0.00%)	5 (6.85%)	3 (25.00%)	135 (10.79%)
VOP	160 (19.18%)	6 (19.35%)	33 (11.07%)	0 (0.00%)	11 (15.07%)	4 (33.33%)	214 (17.11%)
Weapons	164 (19.66%)	4 (12.90%)	46 (15.44%)	0 (0.00%)	14 (19.18%)	1 (8.33%)	229 (18.31%)
Others Offenses	2 (0.24%)	0 (0.00%)	1 (0.34%)	0 (0.00%)	2 (2.74%)	0 (0.00%)	5 (0.40%)
<b>Total *</b>	<b>834 (100.00%)</b>	<b>31 (100.00%)</b>	<b>298 (100.00%)</b>	<b>3 (100.00%)</b>	<b>73 (100.00%)</b>	<b>12 (100.00%)</b>	<b>1,251 (100.00%)</b>

**Offense Categories**



\* Juveniles may have multiple offenses